

OPERATING INSTRUCTIONS

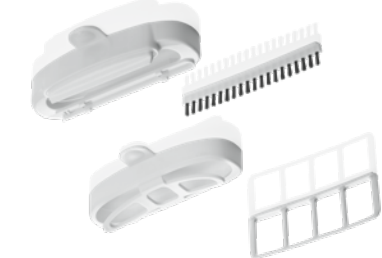
FILLING THE WATER TANK (PRIOR TO PLUGGING IN THE APPLIANCE)



Remove the water tank handle of the tank. Turn the tank upside down and unscrew the bottom screw cap. Fill reservoir with distilled water to desired level. Fasten the screw cap. An anti-calcium cartridge is attached to the screw cap. An anti-calcium cartridge is attached to the screw cap, it is replaceable after a period of time. (Fig. 4)



DO NOT FILL THE TANK WITH HOT WATER. DISTILLED OR FILTERED WATER IS BEST.



- Creaser for perfect ple ts and folds.

CAUTION:
Make sure your steamer is off and has cooled before adding or removing attachments.

HOW TO STEAM

Grasp the handle of the steam nozzle with the silicone Band pulls fabric taut for ease steaming and wrinkle removal. Use steam to freshen and help remove odors. Use the sopleplate to help remove wrinkles in thicker, heavier and less delicate fabrics.

NOTE: Test fabric for color fastness in an inconspicuous spot. Drape liners, towels, handkerchiefs, and napkins over a rod or place on a towel rack. Heavier fabrics may require repeated steaming. Repeat as necessary. With practice, you will gain speed and efficiency. You will soon learn which fabrics require multiple steam applications.

Do not directly touch velvet, silk or other delicate fabrics with the steam head. Use extra caution when steaming delicate fabrics.

TO STEAM DRAPES

Wash and dry drapes as directed, according to fabric type. Rehang drapes and steam when they are in place.

CAUTION:
Sopleplate will be hot when in use. Avoid prolonged contact. Keep steam head moving while steaming your garment.

CLEANING AND STORING

1. Turn the ON/OFF switch to the OFF position and unplug from the power source.
2. Wait for the steamer to cool completely—for at least 30 minutes.
3. Remove the water tank from unit, open bottom cover and empty unused contents. Allow to air-dry.
4. Collapse telescopic hanger pole.
5. Replace water tank.
6. Store the unit.

DECALCIFICATION

If the appliance begins to produce steam more slowly than usual or stops producing steam and then starts again, you may need to decalcify your steamer. Decalcification refers to removing the calcium deposits that form over time on the metal parts of the steamer. For best performance from the steamer, decalcify the unit once a month. The frequency depends upon how often you use the steamer.
To decalcify, add a solution of 1/3 cup white vinegar and 2/3 cup distilled water to the water tank. Place the water tank in the unit. Turn the unit into electrical outlet. Turn to the ON position and run until half the amount has steamed (1 liter). Turn the unit to the OFF position, unplugging from electrical outlet, and allow to sit for 30 minutes.
Repeat the above procedure as many times as necessary until a normal steam rate returns, usually 2–3 times. With each repeated cycle, use a fresh solution of fresh, distilled water without vinegar through the unit at the completion of decalcification before using the unit again to steam garments.

TROUBLESHOOTING THE STEAMER

- **PROBLEM - Steamer fails to heat.**
CAUSE - Steamer not plugged in.
SOLUTION - Plug into electrical outlet.
- **PROBLEM - No steam.**
CAUSE - Water level is low.
SOLUTION - Turn On/Off switch to off position and refill water tank.
- **PROBLEM - Poor steam performance.**
CAUSE - Sediment in tank.
SOLUTION - Decalcify reservoir and use the steamer.
- **PROBLEM - Steam performance deteriorates upon how often you use the steamer.**
The frequency depends upon how often you use the steamer. For best performance from the steamer, decalcify the unit once a month. Allow to air-dry.
2. Wait for the steamer to cool completely— for at least 30 minutes.
3. Remove the water tank from unit, open bottom cover and empty unused contents.

IMPORTANT SAFETY INSTRUCTIONS

When using electrical appliances, especially when children are present, basic safety precautions should always be taken, including the following:

4. Never operate this appliance if it has a damaged cord or plug, if it is not working properly, or if it has been dropped or damaged or dropped into water. Do not attempt to repair the appliance. Incorrect reassembly or repair could cause a risk of fire, electric shock, or injury to persons when the appliance is used. Return the appliance to an authorized service center for examination and repair.

5. Keep the cord away from heated surfaces. Do not allow cord to touch heated surfaces. Do not pull or twist cord. Let appliance cool completely before putting away.
6. This appliance has a polarized plug (one metal part, not water, or steam. Use care when removing water tank or when you turn only one way. If the plug does not fit fully in the outlet, reverse the plug. If it still does not fit, contact a qualified electrician. Do not attempt to defeat this safety feature.
7. Never drop or insert any object into any opening or hose.
8. Do not use outdoors or operate where aerosol (spray) products are being used or where oxygen is being administered.
9. Do not use an extension cord to operate appliance.

10. Surfaces of this appliance may be hot when in use. Do not let heated surfaces touch eyes or skin.
11. Do not place the steam nozzle directly on any surface or on the appliance power cord while it is hot or plugged in. Use the stand provided as described in this manual. Do not use attachments not recommended by the manufacturer.

12. Unplug this appliance before filling or emptying. Do not overfill.
13. While emitting steam, this appliance may cause burns if it is used incorrectly. Do not touch the steam nozzle with hot water.

14. Do not operate steamer without properly filling the water tank with water.
15. Always keep the hose and nozzle elevated above the water tank.
16. Never yank cord to disconnect from outlet. Instead, grasp plug and pull to disconnect.
17. Burns could occur from touching hot metal parts, hot water, or steam. Use care to comply with the limits for a Class B digital device, pursuant to Part 15 of the FCC Rules. These limits are designed to provide reasonable protection against harmful interference in a residential installation. This equipment uses and can radiate radio frequency energy and, if not installed and used in accordance with the instructions, may cause harmful interference to radio communications. However, there is no guarantee that interference will not occur in a particular installation. If this equipment does cause harmful interference to radio or television reception, which can be determined by turning the equipment off and on, the user is encouraged to try to correct the interference by one or more of the following measures:

• Reorient or relocate the receiving antenna.
• Increase the separation between the equipment and receiver.
• Connect the equipment into an outlet on a circuit different from that to which the receiver is connected.
• Consult the dealer or an experienced radio/TV technician for help.

23. Never steam clothes that you or someone else is wearing.
24. Do not hold hand in front of steam.

FEDERAL COMMUNICATIONS COMMISSION NOTICE

WARNING: Changes or modifications to this unit not expressly approved by the party responsible for compliance could void the user's authority to operate the equipment.
17. Burns could occur from touching hot metal parts, hot water, or steam. Use care when removing water tank or when you turn only one way. If the plug does not fit fully in the outlet, reverse the plug. If it still does not fit, contact a qualified electrician. Do not attempt to defeat this safety feature.
18. To reduce likelihood of circuit overload, a steam appliance upside down – there may be hot water in reservoir.
19. If an extension cord is absolutely necessary, a 15 ampere-rated cord should be used. Cords rated for less amperage may cause harmful interference to radio or television reception, which can be determined by turning the equipment off and on, the user is encouraged to try to correct the interference by one or more of the following measures:

SUPPLIER'S DECLARATION OF CONFORMITY

Brand: Conair®
Model No.: GS121
Description: Garment Steamer
1 Cummings Point Road, Stamford, CT 06902 (203) 351-9000
ANSI C63.4-2014
Standard: FCC Part 15 Subpart B,
This device complies with Part 15 of the FCC Rules. Operation is subject to the following two conditions:
(1) This device may not cause harmful interference, and (2) This device must accept any interference received, including interference that originates from authorized radio/TV receivers.

NOTE: This equipment has been tested and found to comply with the limits for a Class B digital device, pursuant to Part 15 of the FCC Rules. These limits are designed to provide reasonable protection against harmful interference in a residential installation. This equipment uses and can radiate radio frequency energy and, if not installed and used in accordance with the instructions, may cause harmful interference to radio communications. However, there is no guarantee that interference will not occur in a particular installation. If this equipment does cause harmful interference to radio or television reception, which can be determined by turning the equipment off and on, the user is encouraged to try to correct the interference by one or more of the following measures:

• Reorient or relocate the receiving antenna.
• Increase the separation between the equipment and receiver.
• Connect the equipment into an outlet on a circuit different from that to which the receiver is connected.
• Consult the dealer or an experienced radio/TV technician for help.

GET TO KNOW YOUR STEAMER



1. Loosen the pole locking nut clockwise. Turn the locking nut. Press down firmly to ensure the pole has reached the bottom. Turn counterclockwise to fasten the locking nut.
2. Fully extend the telescopic pole, making sure to lock the pole upright by engaging the three clips.
3. Place hanger assembly at top of the pole, steam nozzle onto the cradle, and place the steam hanger in preparation for steaming away wrinkles.
4. Place hanger assembly at top of the pole, steam nozzle onto the cradle, and place the steam hanger in preparation for steaming away wrinkles.
5. Place the steam nozzle on the cradle, and place the steam hanger in preparation for steaming away wrinkles.
6. Hang your garment in preparation for steaming away wrinkles.
7. When you are ready to steam, fill the water tank. See FILLING THE WATER TANK section in this booklet for details.
8. Plug the steamer unit into a standard 125V AC power outlet.
9. The bristle brush, silicone band, delicate fabric spacer and creaser attachments easily snap over the sopleplate for use.

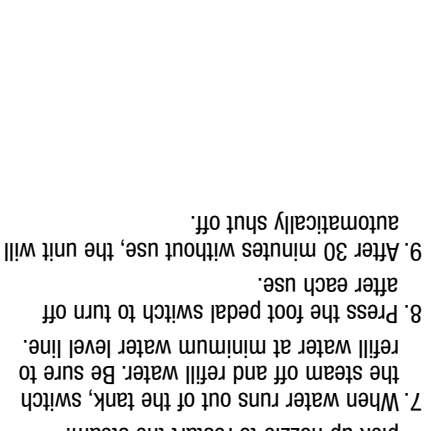
UNPACKING INSTRUCTIONS FOR HOUSEHOLD USE ONLY
Place the box on a large, sturdy, flat surface. Carefully remove the appliance from the packing material. Keep all plastic bags away from children. Some assembly required.
This device complies with Part 15 of the FCC Rules. Operation is subject to the following two conditions:
(1) This device may not cause harmful interference, and (2) This device must accept any interference received, including interference that originates from authorized radio/TV receivers.

STEAMER ASSEMBLY HANGER
1. Loosen the pole locking nut clockwise. Turn the locking nut. Press down firmly to ensure the pole has reached the bottom. Turn counterclockwise to fasten the locking nut.
2. Fully extend the telescopic pole, making sure to lock the pole upright by engaging the three clips.
3. Place hanger assembly at top of the pole, steam nozzle onto the cradle, and place the steam hanger in preparation for steaming away wrinkles.
4. Place hanger assembly at top of the pole, steam nozzle onto the cradle, and place the steam hanger in preparation for steaming away wrinkles.
5. Place the steam nozzle on the cradle, and place the steam hanger in preparation for steaming away wrinkles.
6. Hang your garment in preparation for steaming away wrinkles.
7. When you are ready to steam, fill the water tank. See FILLING THE WATER TANK section in this booklet for details.
8. Plug the steamer unit into a standard 125V AC power outlet.
9. The bristle brush, silicone band, delicate fabric spacer and creaser attachments easily snap over the sopleplate for use.

TURNING STEAMER ON

1. Remove water tank from base, fill with distilled water, and press tank down into the main unit.
2. Press the foot-activated power switch to turn the unit on. (Fig. 1).
3. While water is heating, the blue light logo will blink.
4. Once the blue light is steady, the unit is ready to use.
5. Press the steam button on the rear of steam head to release steam at high velocity. (Fig. 2)
6. This unit features a steam pause feature when the nozzle is placed on the hanger. Simply hang nozzle to temporarily stop steam and pick up nozzle to restart the steam.
7. When water runs out of the tank, switch refill water at minimum water level line. The steam off and refill water. Be sure to after each use.
8. Press the foot pedal switch to turn off automatically shut off.
9. After 30 minutes without use, the unit will steam freely.

USING PANTS CLIP SYSTEM
The fabric steamer is equipped with a pants clip system for holding pants taut for faster steaming.
Please note: Some pants may be too long just use the top clips and let your pants hang freely.



ATTACHMENTS
The steamer includes several attachments to help remove wrinkles and freshen fabrics. Attachments are stored in the bottom cover of the steamer. To use attachments, simply snap them onto the steam nozzle. The attachments include:
• Bristle Brush: Loosens fibers for faster steaming and wrinkle removal.
• Silicone Band: Pulls fabric taut for ease steaming and wrinkle removal.
• Fabric Spacer: Protects fragile fabrics and trims white steaming.
• Creaser: For perfect ple ts and folds.
• Sopleplate: Helps remove wrinkles in thicker, heavier and less delicate fabrics.

ATTACHMENTS
The steamer includes several attachments to help remove wrinkles and freshen fabrics. Attachments are stored in the bottom cover of the steamer. To use attachments, simply snap them onto the steam nozzle. The attachments include:
• Bristle Brush: Loosens fibers for faster steaming and wrinkle removal.
• Silicone Band: Pulls fabric taut for ease steaming and wrinkle removal.
• Fabric Spacer: Protects fragile fabrics and trims white steaming.
• Creaser: For perfect ple ts and folds.
• Sopleplate: Helps remove wrinkles in thicker, heavier and less delicate fabrics.

ATTACHMENTS

Remove the water tank handle of the tank. Turn the tank upside down and unscrew the bottom screw cap. Fill reservoir with distilled water to desired level. Fasten the screw cap. An anti-calcium cartridge is attached to the screw cap. An anti-calcium cartridge is attached to the screw cap, it is replaceable after a period of time. (Fig. 4)

Remove the water tank handle of the tank. Turn the tank upside down and unscrew the bottom screw cap. Fill reservoir with distilled water to desired level. Fasten the screw cap. An anti-calcium cartridge is attached to the screw cap. An anti-calcium cartridge is attached to the screw cap, it is replaceable after a period of time. (Fig. 4)

Remove the water tank handle of the tank. Turn the tank upside down and unscrew the bottom screw cap. Fill reservoir with distilled water to desired level. Fasten the screw cap. An anti-calcium cartridge is attached to the screw cap. An anti-calcium cartridge is attached to the screw cap, it is replaceable after a period of time. (Fig. 4)

Remove the water tank handle of the tank. Turn the tank upside down and unscrew the bottom screw cap. Fill reservoir with distilled water to desired level. Fasten the screw cap. An anti-calcium cartridge is attached to the screw cap. An anti-calcium cartridge is attached to the screw cap, it is replaceable after a period of time. (Fig. 4)

ATTACHMENTS

Remove the water tank handle of the tank. Turn the tank upside down and unscrew the bottom screw cap. Fill reservoir with distilled water to desired level. Fasten the screw cap. An anti-calcium cartridge is attached to the screw cap. An anti-calcium cartridge is attached to the screw cap, it is replaceable after a period of time. (Fig. 4)

Remove the water tank handle of the tank. Turn the tank upside down and unscrew the bottom screw cap. Fill reservoir with distilled water to desired level. Fasten the screw cap. An anti-calcium cartridge is attached to the screw cap. An anti-calcium cartridge is attached to the screw cap, it is replaceable after a period of time. (Fig. 4)

Remove the water tank handle of the tank. Turn the tank upside down and unscrew the bottom screw cap. Fill reservoir with distilled water to desired level. Fasten the screw cap. An anti-calcium cartridge is attached to the screw cap. An anti-calcium cartridge is attached to the screw cap, it is replaceable after a period of time. (Fig. 4)

ATTACHMENTS

Remove the water tank handle of the tank. Turn the tank upside down and unscrew the bottom screw cap. Fill reservoir with distilled water to desired level. Fasten the screw cap. An anti-calcium cartridge is attached to the screw cap. An anti-calcium cartridge is attached to the screw cap, it is replaceable after a period of time. (Fig. 4)

Remove the water tank handle of the tank. Turn the tank upside down and unscrew the bottom screw cap. Fill reservoir with distilled water to desired level. Fasten the screw cap. An anti-calcium cartridge is attached to the screw cap. An anti-calcium cartridge is attached to the screw cap, it is replaceable after a period of time. (Fig. 4)

Remove the water tank handle of the tank. Turn the tank upside down and unscrew the bottom screw cap. Fill reservoir with distilled water to desired level. Fasten the screw cap. An anti-calcium cartridge is attached to the screw cap. An anti-calcium cartridge is attached to the screw cap, it is replaceable after a period of time. (Fig. 4)

ATTACHMENTS

Remove the water tank handle of the tank. Turn the tank upside down and unscrew the bottom screw cap. Fill reservoir with distilled water to desired level. Fasten the screw cap. An anti-calcium cartridge is attached to the screw cap. An anti-calcium cartridge is attached to the screw cap, it is replaceable after a period of time. (Fig. 4)

Remove the water tank handle of the tank. Turn the tank upside down and unscrew the bottom screw cap. Fill reservoir with distilled water to desired level. Fasten the screw cap. An anti-calcium cartridge is attached to the screw cap. An anti-calcium cartridge is attached to the screw cap, it is replaceable after a period of time. (Fig. 4)

Remove the water tank handle of the tank. Turn the tank upside down and unscrew the bottom screw cap. Fill reservoir with distilled water to desired level. Fasten the screw cap. An anti-calcium cartridge is attached to the screw cap. An anti-calcium cartridge is attached to the screw cap, it is replaceable after a period of time. (Fig. 4)

ATTACHMENTS

Remove the water tank handle of the tank. Turn the tank upside down and unscrew the bottom screw cap. Fill reservoir with distilled water to desired level. Fasten the screw cap. An anti-calcium cartridge is attached to the screw cap. An anti-calcium cartridge is attached to the screw cap, it is replaceable after a period of time. (Fig. 4)

Remove the water tank handle of the tank. Turn the tank upside down and unscrew the bottom screw cap. Fill reservoir with distilled water to desired level. Fasten the screw cap. An anti-calcium cartridge is attached to the screw cap. An anti-calcium cartridge is attached to the screw cap, it is replaceable after a period of time. (Fig. 4)

Remove the water tank handle of the tank. Turn the tank upside down and unscrew the bottom screw cap. Fill reservoir with distilled water to desired level. Fasten the screw cap. An anti-calcium cartridge is attached to the screw cap. An anti-calcium cartridge is attached to the screw cap, it is replaceable after a period of time. (Fig. 4)

ATTACHMENTS

Remove the water tank handle of the tank. Turn the tank upside down and unscrew the bottom screw cap. Fill reservoir with distilled water to desired level. Fasten the screw cap. An anti-calcium cartridge is attached to the screw cap. An anti-calcium cartridge is attached to the screw cap, it is replaceable after a period of time. (Fig. 4)

Remove the water tank handle of the tank. Turn the tank upside down and unscrew the bottom screw cap. Fill reservoir with distilled water to desired level. Fasten the screw cap. An anti-calcium cartridge is attached to the screw cap. An anti-calcium cartridge is attached to the screw cap, it is replaceable after a period of time. (Fig. 4)

Remove the water tank handle of the tank. Turn the tank upside down and unscrew the bottom screw cap. Fill reservoir with distilled water to desired level. Fasten the screw cap. An anti-calcium cartridge is attached to the screw cap. An anti-calcium cartridge is attached to the screw cap, it is replaceable after a period of time. (Fig. 4)

ATTACHMENTS

Remove the water tank handle of the tank. Turn the tank upside down and unscrew the bottom screw cap. Fill reservoir with distilled water to desired level. Fasten the screw cap. An anti-calcium cartridge is attached to the screw cap. An anti-calcium cartridge is attached to the screw cap, it is replaceable after a period of time. (Fig. 4)

Remove the water tank handle of the tank. Turn the tank upside down and unscrew the bottom screw cap. Fill reservoir with distilled water to desired level. Fasten the screw cap. An anti-calcium cartridge is attached to the screw cap. An anti-calcium cartridge is attached to the screw cap, it is replaceable after a period of time. (Fig. 4)

Remove the water tank handle of the tank. Turn the tank upside down and unscrew the bottom screw cap. Fill reservoir with distilled water to desired level. Fasten the screw cap. An anti-calcium cartridge is attached to the screw cap. An anti-calcium cartridge is attached to the screw cap, it is replaceable after a period of time. (Fig. 4)

ATTACHMENTS

Remove the water tank handle of the tank. Turn the tank upside down and unscrew the bottom screw cap. Fill reservoir with distilled water to desired level. Fasten the screw cap. An anti-calcium cartridge is attached to the screw cap. An anti-calcium cartridge is attached to the screw cap, it is replaceable after a period of time. (Fig. 4)

Remove the water tank handle of the tank. Turn the tank upside down and unscrew the bottom screw cap. Fill reservoir with distilled water to desired level. Fasten the screw cap. An anti-calcium cartridge is attached to the screw cap. An anti-calcium cartridge is attached to the screw cap, it is replaceable after a period of time. (Fig. 4)

Remove the water tank handle of the tank. Turn the tank upside down and unscrew the bottom screw cap. Fill reservoir with distilled water to desired level. Fasten the screw cap. An anti-calcium cartridge is attached to the screw cap. An anti-calcium cartridge is attached to the screw cap, it is replaceable after a period of time. (Fig. 4)

ATTACHMENTS

Remove the water tank handle of the tank. Turn the tank upside down and unscrew the bottom screw cap. Fill reservoir with distilled water to desired level. Fasten the screw cap. An anti-calcium cartridge is attached to the screw cap. An anti-calcium cartridge is attached to the screw cap, it is replaceable after a period of time. (Fig. 4)

Remove the water tank handle of the tank. Turn the tank upside down and unscrew the bottom screw cap. Fill reservoir with distilled water to desired level. Fasten the screw cap. An anti-calcium cartridge is attached to the screw cap. An anti-calcium cartridge is attached to the screw cap, it is replaceable after a period of time. (Fig. 4)

Remove the water tank handle of the tank. Turn the tank upside down and unscrew the bottom screw cap. Fill reservoir with distilled water to desired level. Fasten the screw cap. An anti-calcium cartridge is attached to the screw cap. An anti-calcium cartridge is attached to the screw cap, it is replaceable after a period of time. (Fig. 4)

ATTACHMENTS

Remove the water tank handle of the tank. Turn the tank upside down and unscrew the bottom screw cap. Fill reservoir with distilled water to desired level. Fasten the screw cap. An anti-calcium cartridge is attached to the screw cap. An anti-calcium cartridge is attached to the screw cap, it is replaceable after a period of time. (Fig. 4)

Remove the water tank handle of the tank. Turn the tank upside down and unscrew the bottom screw cap. Fill reservoir with distilled water to desired level. Fasten the screw cap. An anti-calcium cartridge is attached to the screw cap. An anti-calcium cartridge is attached to the screw cap, it is replaceable after a period of time. (Fig. 4)

Remove the water tank handle of the tank. Turn the tank upside down and unscrew the bottom screw cap. Fill reservoir with distilled water to desired level. Fasten the screw cap. An anti-calcium cartridge is attached to the screw cap. An anti-calcium cartridge is attached to the screw cap, it is replaceable after a period of time. (Fig. 4)

ATTACHMENTS

Remove the water tank handle of the tank. Turn the tank upside down and unscrew the bottom screw cap. Fill reservoir with distilled water to desired level. Fasten the screw cap. An anti-calcium cartridge is attached to the screw cap. An anti-calcium cartridge is attached to the screw cap, it is replaceable after a period of time. (Fig. 4)

Remove the water tank handle of the tank. Turn the tank upside down and unscrew the bottom screw cap. Fill reservoir with distilled water to desired level. Fasten the screw cap. An anti-calcium cartridge is attached to the screw cap. An anti-calcium cartridge is attached to the screw cap, it is replaceable after a period of time. (Fig. 4)

Remove the water tank handle of the tank. Turn the tank upside down and unscrew the bottom screw cap. Fill reservoir with distilled water to desired level. Fasten the screw cap. An anti-calcium cartridge is attached to the screw cap. An anti-calcium cartridge is attached to the screw cap, it is replaceable after a period of time. (Fig. 4)

ATTACHMENTS

Remove the water tank handle of the tank. Turn the tank upside down and unscrew the bottom screw cap. Fill reservoir with distilled water to desired level. Fasten the screw cap. An anti-calcium cartridge is attached to the screw cap. An anti-calcium cartridge is attached to the screw cap, it is replaceable after a period of time. (Fig. 4)

Remove the water tank handle of the tank. Turn the tank upside down and unscrew the bottom screw cap. Fill reservoir with distilled water to desired level. Fasten the screw cap. An anti-calcium cartridge is attached to the screw cap. An anti-calcium cartridge is attached to the screw cap, it is replaceable after a period of time. (Fig. 4)

Remove the water tank handle of the tank. Turn the tank upside down and unscrew the bottom screw cap. Fill reservoir with distilled water to desired level. Fasten the screw cap. An anti-calcium cartridge is attached to the screw cap. An anti-calcium cartridge is attached to the screw cap, it is replaceable after a period of time. (Fig. 4)

ATTACHMENTS

Remove the water tank handle of the tank. Turn the tank upside down and unscrew the bottom screw cap. Fill reservoir with distilled water to desired level. Fasten the screw cap. An anti-calcium cartridge is attached to the screw cap. An anti-calcium cartridge is attached to the screw cap, it is replaceable after a period of time. (Fig. 4)

Remove the water tank handle of the tank. Turn the tank upside down and unscrew the bottom screw cap. Fill reservoir with distilled water to desired level. Fasten the screw cap. An anti-calcium cartridge is attached to the screw cap. An anti-calcium cartridge is attached to the screw cap, it is replaceable after a period of time. (Fig. 4)

Remove the water tank handle of the tank. Turn the tank upside down and unscrew the bottom screw cap. Fill reservoir with distilled water to desired level. Fasten the screw cap. An anti-calcium cartridge is attached to the screw cap. An anti-calcium cartridge is attached to the screw cap, it is replaceable after a period of time. (Fig. 4)

ATTACHMENTS

Remove the water tank handle of the tank. Turn the tank upside down and unscrew the bottom screw cap. Fill reservoir with distilled water to desired level. Fasten the screw cap. An anti-calcium cartridge is attached to the screw cap. An anti-calcium cartridge is attached to the screw cap, it is replaceable after a period of time. (Fig. 4)

Remove the water tank handle of the tank. Turn the tank upside down and unscrew the bottom screw cap. Fill reservoir with distilled water to desired level. Fasten the screw cap. An anti-calcium cartridge is attached to the screw cap. An anti-calcium cartridge is attached to the screw cap, it is replaceable after a period of time. (Fig. 4)

Remove the water tank handle of the tank. Turn the tank upside down and unscrew the bottom screw cap. Fill reservoir with distilled water to desired level. Fasten the screw cap. An anti-calcium cartridge is attached to the screw cap. An anti-calcium cartridge is attached to the screw cap, it is replaceable after a period of time. (Fig. 4)

ATTACHMENTS

Remove the water tank handle of the tank. Turn the tank upside down and unscrew the bottom screw cap. Fill reservoir with distilled water to desired level. Fasten the screw cap. An anti-calcium cartridge is attached to the screw cap. An anti-calcium cartridge is attached to the screw cap, it is replaceable after a period of time. (Fig. 4)

Remove the water tank handle of the tank. Turn the tank upside down and unscrew the bottom screw cap. Fill reservoir with distilled water to desired level. Fasten the screw cap. An anti-calcium cartridge is attached to the screw cap. An anti-calcium cartridge is attached to the screw cap, it is replaceable after a period of time. (Fig. 4)

Remove the water tank handle of the tank. Turn the tank upside down and unscrew the bottom screw cap. Fill reservoir with distilled water to desired level. Fasten the screw cap. An anti-calcium cartridge is attached to the screw cap. An anti-calcium cartridge is attached to the screw cap, it is replaceable after a period of time. (Fig. 4)

ATTACHMENTS

Remove the water tank handle of the tank. Turn the tank upside down and unscrew the bottom screw cap. Fill reservoir with distilled water to desired level. Fasten the screw cap. An anti-calcium cartridge is attached to the screw cap. An anti-calcium cartridge is attached to the screw cap, it is replaceable after a period of time. (Fig. 4)

Remove the water tank handle of the tank. Turn the tank upside down and unscrew the bottom screw cap. Fill reservoir with distilled water to desired level. Fasten the screw cap. An anti-calcium cartridge is attached to the screw cap. An anti-calcium cartridge is attached to the screw cap, it is replaceable after a period of time. (Fig. 4)

Remove the water tank handle of the tank. Turn the tank upside down and unscrew the bottom screw cap. Fill reservoir with distilled water to desired level. Fasten the screw cap. An anti-calcium cartridge is attached to the screw cap. An anti-calcium cartridge is attached to the screw cap, it is replaceable after a period of time. (Fig. 4)

ATTACHMENTS

Remove the water tank handle of the tank. Turn the tank upside down and unscrew the bottom screw cap. Fill reservoir with distilled water to desired level. Fasten the screw cap. An anti-calcium cartridge is attached to the screw cap. An anti-calcium cartridge is attached to the screw cap, it is replaceable after a period of time. (Fig. 4)

Remove the water tank handle of the tank. Turn the tank upside down and unscrew the bottom screw cap. Fill reservoir with distilled water to desired level. Fasten the screw cap. An anti-calcium cartridge is attached to the screw cap. An anti-calcium cartridge is attached to the screw cap, it is replaceable after a period of time. (Fig. 4)

Remove the water tank handle of the tank. Turn the tank upside down and unscrew the bottom screw cap. Fill reservoir with distilled water to desired level. Fasten the screw cap. An anti-calcium cartridge is attached to the screw cap. An anti-calcium cartridge is attached to the screw cap, it is replaceable after a period of time. (Fig. 4)

ATTACHMENTS

Remove the water tank handle of the tank. Turn the tank upside down and unscrew the bottom screw cap. Fill reservoir with distilled water to desired level. Fasten the screw cap. An anti-calcium cartridge is attached to the screw cap. An anti-calcium cartridge is attached to the screw cap, it is replaceable after a period of time. (Fig. 4)

Remove the water tank handle of the tank. Turn the tank upside down and unscrew the bottom screw cap. Fill reservoir with distilled water to desired level. Fasten the screw cap. An anti-calcium cartridge is attached to the screw cap. An anti-calcium cartridge is attached to the screw cap, it is replaceable after a period of time. (Fig. 4)

Remove the water tank handle of the tank. Turn the tank upside down and unscrew the bottom screw cap. Fill reservoir with distilled water to desired level. Fasten the screw cap. An anti-calcium cartridge is attached to the screw cap. An anti-calcium cartridge is attached to the screw cap, it is replaceable after a period of time. (Fig. 4)

ATTACHMENTS

Remove the water tank handle of the tank. Turn the tank upside down and unscrew the bottom screw cap. Fill reservoir with distilled water to desired level. Fasten the screw cap. An anti-calcium cartridge is attached to the screw cap. An anti-calcium cartridge is attached to the screw cap, it is replaceable after a period of time. (Fig. 4)

Remove the water tank handle of the tank. Turn the tank upside down and unscrew the bottom screw cap. Fill reservoir with distilled water to desired level. Fasten the screw cap. An anti-calcium cartridge is attached to the screw cap. An anti-calcium cartridge is attached to the screw cap, it is replaceable after a period of time. (Fig. 4)

Remove the water tank handle of the tank. Turn the tank upside down and unscrew the bottom screw cap. Fill reservoir with distilled water to desired level. Fasten the screw cap. An anti-calcium cartridge is attached to the screw cap. An anti-calcium cartridge is attached to the screw cap, it is replaceable after a period of time. (Fig. 4)

ATTACHMENTS

Remove the water tank handle of the tank. Turn the tank upside down and unscrew the bottom screw cap. Fill reservoir with distilled water to desired level. Fasten the screw cap. An

